

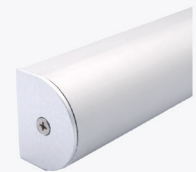
TECHNICAL INFORMATION



ATLANTIC +

With all the benefits of our Atlantic range, **ATLANTIC +** offers full-height cubicles and is the perfect choice for unisex toilets, and for stylish washroom areas where privacy is key.

- Solid Grade Laminate (SGL)
- Suitable for wet and dry environments
- Heavy-duty stainless-steel fittings for high traffic areas
- Available with full-height doors or overpanels
- Maintains a reduced floor and ceiling clearance for ventilation and ease of cleaning
- Available with a pedestal or channel leg
- Made-to-measure
- Wide colour choice
- Brushed Satin Stainless Steel fittings as standard



ATLANTIC + DETAILS

MATERIAL

13mm Solid Grade Laminate (SGL)
SGL is extremely resistant against impact and its surfaces are impervious to water
Panels have machined black radiused edges
Available in a range of standard colours

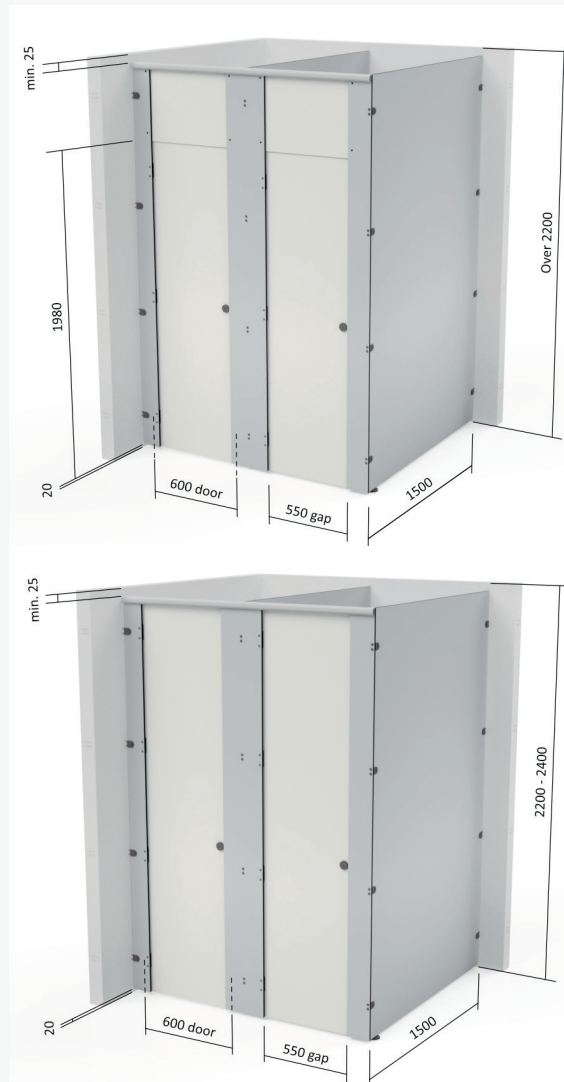
FITTINGS

Includes: Indicator latch with external emergency release (handed)
Set of 3 rise/fall gravity hinges (handed)
Wall and bolt through panel fixing brackets with T-nuts exposed
Support leg
P-shaped headrail

| | |
|----------|---|
| Standard | Brushed Satin Stainless Steel |
| Option | Polished Stainless Steel, Carbon Black and Copper available at extra cost |

OPTIONS

Coat hook & toilet roll holders available



ATLANTIC +

| | |
|--|--|
| Overall height | |
| Overpanels | Over 2000mm |
| Full Doors | 2200mm – 2400mm |
| Floor clearance | 20mm (varies depending on leg height) |
| Door size options | |
| Width | 600mm |
| Door heights to suit panel configuration | |
| Cubicle depth | |
| Standard | 1500mm |
| Cubicle width | |
| Minimum | 800mm |
| Leg height options | |
| Standard | 20mm 50mm Channel Leg |

DIMENSIONS

*All measurements in millimetres.

Technical information for standard cubicle ranges – E & OE 2023 © All copyright reserved Aaztec Associates Limited.

Drawings are shown as a cubicle size guide – all cubicles are made to suit your site dimensions.