

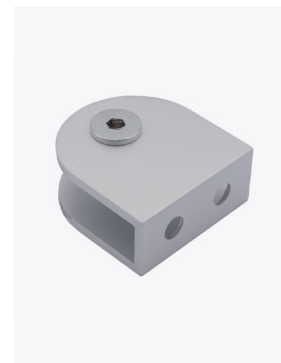
TECHNICAL INFORMATION



PENGUIN

Perfect for primary schools, our **PENGUIN** range is robust, stylish and fun, making it appealing to children, whilst offering durability and safety.

- Solid Grade Laminate (SGL)
- Suitable for wet and dry environments
- Available in three door height options for different key stages
- Low-height, curve-top doors for easy adult supervision
- Also available with ski-slope shaped doors
- Anti-finger trap hinges & emergency release indicator bolts for added safety
- Also available in Compact Density Fibreboard (CDF)
- Wide choice of lots of fun, vibrant colours, and digitally printed doors
- Black Powder Coated or SAA fittings as standard



PENGUIN DETAILS

MATERIAL

13mm Solid Grade Laminate (SGL)
SGL is extremely resistant against impact and its surfaces are impervious to water
Panels have machined black radiused edges
Available in a range of standard colours

FITTINGS

Includes: Indicator latch with external emergency release
Set of 2 rise/fall hinges with lozenge cover plates
Wall and bolt through panel fixing brackets
Adjustable height support leg
U-channel headrail

Standard	Black Powder Coated or Satin Anodised Aluminium (SAA)
Option	Any RAL colour available at extra cost

OPTIONS

Coat hook & toilet roll holders available



PENGUIN

Overall height	2000mm
Floor clearance	180mm (varies depending on leg height)
Door height	
(A) Nursery	1200mm
(B) Key Stage 1	1350mm
(C) Key Stage 2	1500mm
Cubicle depth	
Standard	1500mm
Cubicle width	
Standard	800mm

DIMENSIONS

*All measurements in millimetres.

Technical information for standard cubicle ranges – E & OE 2023 © All copyright reserved Aaztec Associates Limited.

Drawings are shown as a cubicle size guide – all cubicles are made to suit your site dimensions.