



AAZTEC
CUBICLES

**WASHROOM
COLLECTION**

ENGINEERING INTELLIGENT CUBICLE & WASHROOM SOLUTIONS

Aaztec has been at the forefront of pioneering new techniques in the design, manufacture and installation of high quality cubicles and washrooms since 1992. Our ability to tailor a washroom solution to suit the exact needs of a client's environment is unrivalled, and today our customers span all industry sectors including:

- Education
- Leisure
- Healthcare
- Public Sector
- Retail
- Hotel
- Transport
- Industrial

Aaztec offers a full design service to ensure every cubicle or washroom fits the customer's exact needs in terms of look, feel, materials and durability. We can also advise on DDA compliance and provide finishes and fittings to complement and enhance any design or colour scheme. The high-tech manufacturing capabilities at our factory enable Aaztec to produce any volume of product, from a highly bespoke 'one off' piece for a boutique hotel, to large quantities for high footfall areas such as universities and stadiums. Every item we produce has our quality guarantee for complete customer satisfaction.

Aaztec can supply, or professionally install to suit your individual requirements. Our accreditations and expertise enable us to act as a sub-contractor to construction

companies, architects and designers. We can deliver supply only products for contractors to install or manage complete installation or refurbishment projects from start to finish. Our installation teams are highly skilled, experienced and committed, not only to ensuring that your toilet cubicles and vanity units are fitted just right but also that you are entirely satisfied.

Aaztec is a strategic partner trusted by construction professionals, facility managers and business owners to deliver excellent service and value throughout every stage of a project.

For advice on design or help with product selection, please contact the Aaztec team today:

Tel: 01423 326400
 Fax: 01423 325115
 Email: sales@aaztec.com

www.aaztec.com

Aaztec Cubicles
 Becklands Close
 Bar Lane
 Boroughbridge
 North Yorkshire
 YO51 9NR

Use our knowledge to your advantage.

CONTENTS

Choosing your Cubicles	4
<hr/>	
PREMIER COLLECTION	
Baltic	6
Signature Flush	8
Ocean	10
<hr/>	
DELUXE COLLECTION	
Atlantic	12
Pacific	14
Marine	16
Dune	18
<hr/>	
ESSENTIAL COLLECTION	
Tropic	20
Solar	21
<hr/>	
CHILDREN'S COLLECTION	
Penguin	22
Jungle	24
<hr/>	
COLLECTION	
Recycloo	26
Neptune	28
Nautilus & Fortress	29
<hr/>	
Cubicle Layouts	30
Vanity Units	32
Ducts / Panels	34
Sanitary Ware	36
Accessories	38
Lockers	40
Benches	42
Furniture	43
Secure Furniture & Mediduct	
Healthcare	44
Handwash Stations & Showerpods	45
<hr/>	
Service Plan	46
Design Services	47
Contact	48

*Please note all photographs seen in this brochure are of actual projects completed by Aaztec Cubicles and are not rendered images.

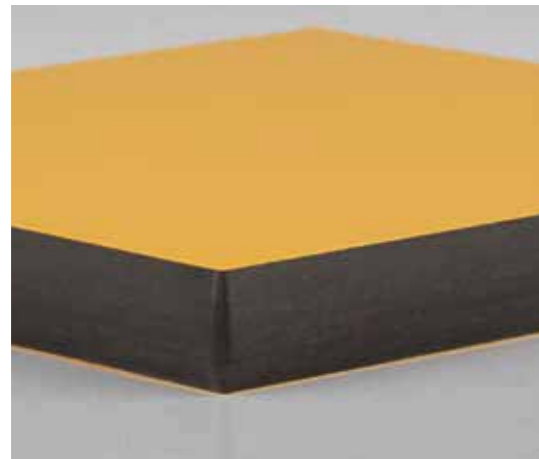


Follow these three easy steps to choose your cubicles and washroom products:

- 1 Choose your panel performance requirements from the panel guide below.
- 2 Choose your cubicle fittings range from the following cubicle collections:
 - Premier - Essential
 - Deluxe - Children's
- 3 Contact the helpful Aaztec team on 01423 326400 to choose colour schemes, Vanity units, duct panels or any other products to ensure a stylish and well designed washroom.

PANEL GUIDE

Here at Aaztec we pride ourselves on being up to date with the latest modern materials and technology involved in the manufacture of cubicles. We manufacture our cubicles in various different materials to suit the individual requirements and budgets of our customers, and the environments they are to be installed in. Please read the guide to help determine which material would be suitable for your cubicles, or contact us if you require any further advice.



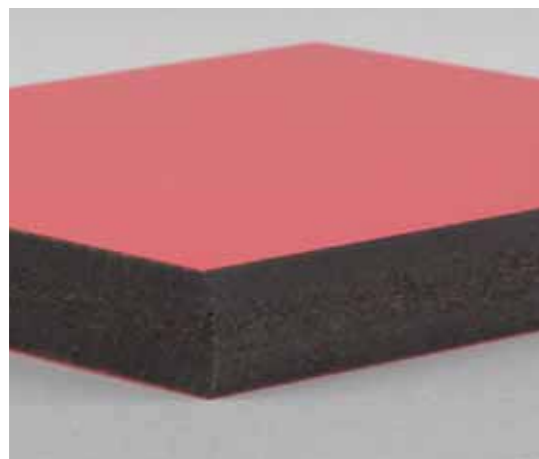
Ranges available in SGL: Baltic, Signature Flush, Ocean, Atlantic, Pacific, Marine, Penguin, Nautilus, Neptune, Fortress

Solid Grade Laminate (SGL)



SGL provides outstanding durability with superior resistance against impact, abrasion and general surface wear. Its surface is impervious to water and maintains its integrity even in the most heavy duty applications.

It is produced from layers of Kraft paper impregnated with phenolic resin with two decorative sides, and to 12.5mm thick. SGL is the ideal choice for washroom and changing room areas that have very high traffic, or challenging and wet conditions. with over 24 standard colour choices



Ranges available in CDF: Baltic, Ocean, Atlantic, Pacific, Marine, Penguin, Nautilus, Neptune

Compact Density Fibreboard (CDF)



CDF is a high density 12.8mm thick black fibreboard core fused between two impregnated melamine decorative layers. CDF is a robust cost effective self-supporting material. It is also environmentally friendly being made from sustainable Swiss forests and 90% renewable energy sources.

CDF is ideal for washroom and changing room areas requiring hard wearing, moisture resistant surfaces. CDF offers 19 standard stock colour choices.



Ranges available in PBL: Baltic, Atlantic, Pacific, Marine, Dune, Tropic, Jungle

Pre-Bonded Laminate (PBL)



PBL is a premium quality 0.7mm laminated surface finish of Kronoswiss MDF with a multi-layered structure in accordance with EN438, that meets the highest standards in terms of wear resistance, shock and impact strength, in 19.2mm thick panels.

All PBL panels have impact resistant, ABS edging applied.

PBL is particularly suitable for short lead time projects that require wear and tear properties in dry environments. PBL offers 19 standard stock colour choices.



Ranges available in MFC: Baltic, Atlantic, Pacific, Marine, Dune, Tropic, Solar, Jungle

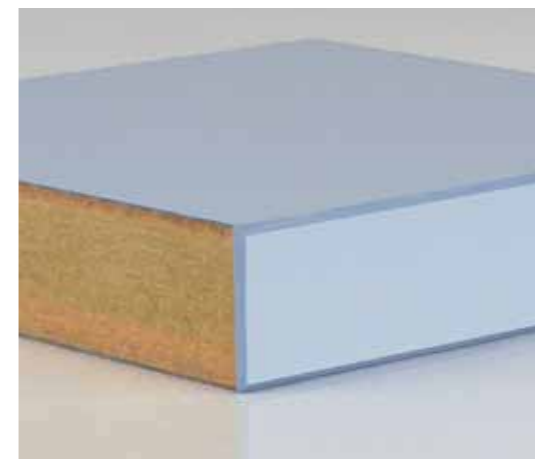
Melamine Faced Chipboard (MFC)



MFC incorporates two decorative melamine surfaces bonded to both sides of high density, chipboard under high pressure and temperature creating an 18mm thick panel.

All MFC panels have impact resistant, ABS edging applied.

MFC is a cost effective, hygienic and lightweight solution for all dry toilet areas, with over 40 standard colour choices.



Ranges available in HPL: Baltic, Signature Flush, Atlantic, Pacific, Marine, Dune, Tropic, Jungle

High Pressure Laminate (HPL)



HPL is constructed from layers of high quality kraft paper, reinforced by thermosetting resins with one decorative surface. The result is a hygienic 0.8mm thick flexible sheet material. HPL is bonded onto a coreboard substrate to produce a strong finished 20mm thick panel. Panels can be post-formed to create a seamless, curved edge detail.

All HPL panels have impact resistant, ABS edging applied.

HPL is suitable for use in areas of high traffic and stylish, designed areas, with over 40 standard colour choices.

PREMIER COLLECTION

PREMIER COLLECTION



The ultimate in style and functionality; the BALTIC range is perfect for areas where appearance and performance are paramount

BALTIC is a premium range of cubicles with a high quality build specification, incorporating eye-catching curved aluminium mid and end fascia panels, which are available in a range of colours including striking metallic finishes. A popular choice for areas where appearance and performance are paramount.

Prestigious hotels and offices have chosen BALTIC to reflect their desire for attractive, quality products. The unique design allows both inward and outward opening doors to be placed side by side thereby integrating easily accessible cubicles when required.

The indicator bolts are easily operated by people of all ages and abilities and are vandal resistant.

Combine these cubicles with matching vanity units and duct panelling for the ultimate in stylish good looks.

Toilet roll holders and hat & coat hooks are available as extras.



PANEL OPTIONS:



BALTIC



Sleek lines, flush fronts and minimalist fittings; SIGNATURE FLUSH is the ultimate in modernity and elegance

The seamless appeal of SIGNATURE FLUSH'S inline façade is a clear design statement. A style many commercial projects now expect and one SIGNATURE washroom cubicles can provide with surprising affordability in a standard or floor to ceiling height option.

SIGNATURE cubicles are a contemporary, high quality washroom solution that are popular in two high grade finishes, with almost unlimited colour options in both real wood veneer and laminate. These cubicles are complemented with stainless steel fittings in either satin or polished finishes to provide a modern design with a luxurious feel.

Perfect for the most stylish environments, SIGNATURE FLUSH is nothing short of flawless.

Toilet roll holders and hat & coat hooks are available as extras.



PANEL OPTIONS:





Durability and strength; the OCEAN range is perfect for areas of high use

The perfect choice for the leisure industry where durability is a prerequisite, OCEAN cubicles combine clean lines with extreme strength, and are usually made from solid grade laminate which makes them very effective in dealing with the daily wear and tear associated with high use areas.

OCEAN is an attractive, strong and durable framed system with anti-lift off doors made from either solid grade laminate or compact density fibreboard. With hardwearing, protective polyester powder coated finishes, OCEAN is tailor made for punishing public environments. Add child safe anti-finger trap hinges, emergency release door latches and a vandal resistant door frame, this non-corrosive cubicle is suitable for all areas including wet area environments.

Toilet roll holders and hat & coat hooks are available as extras.



PANEL OPTIONS:



OCEAN

DELUXE COLLECTION

DELUXE COLLECTION



ATLANTIC

Tough yet beautiful; ATLANTIC is ideal for environments likely to suffer from heavy abuse

ATLANTIC cubicles are perfect for areas with high traffic. Tough yet beautiful, these top of the range cubicles, usually made with solid grade laminate panels, are suitable for both wet and dry areas. Where appearances count in swimming pools and wet changing areas ATLANTIC is the perfect choice.

Brushed satin 304 grade stainless steel fittings enhance the good looks and come as standard. For a little extra you can upgrade to a 316 grade polished finish.

Like all of our ranges, ATLANTIC is available in a range of colours with matching vanity units and duct panels, for a totally co-ordinated look

Toilet roll holders and hat & coat hooks are available as extras.



PANEL OPTIONS:



ATLANTIC



Versatile and distinguished;
the PACIFIC range maximises
your space and budget

When only the best is good enough, PACIFIC is the range to choose. Offering stylish options with postformed or square edged front pilasters and optional upgrades to polished aluminium fittings, no other range is so versatile and distinguished. Suitable for use in prestigious buildings where looks and performance count, these cubicles can be designed to exacting specifications to maximise available space and budget.

Fittings come in satin anodised aluminium (SAA) and are also available in a polished (cost option) finish.

PACIFIC is available in a range of colours with matching vanity units and duct panels, for a totally co-ordinated look.

Toilet roll holders and hat & coat hooks are available as extras.



PANEL OPTIONS:





Popular and durable; the MARINE range is perfect for any area

By far our most popular cubicles, MARINE is a cost effective choice offering users a clean and pleasant experience. Strong durable fittings provide maintenance peace of mind. Ideal for all applications including education, healthcare and industry.

There is no situation where MARINE cubicles are not suitable. They are durable and when using Solid Grade Laminate, can be sited in both wet and dry areas allowing for continuity of design.

Usually made with virtually indestructible solid grade laminate and complemented with black powder coated fittings to match the eye-catching and hardwearing edge detail of the cubicles, these really are 'just the job'. Other fittings colour options available.

Available in a range of colours with matching vanity units, duct panels, wall boarding, lockers and benches, Marine is the range to choose for a completely co-ordinated look.

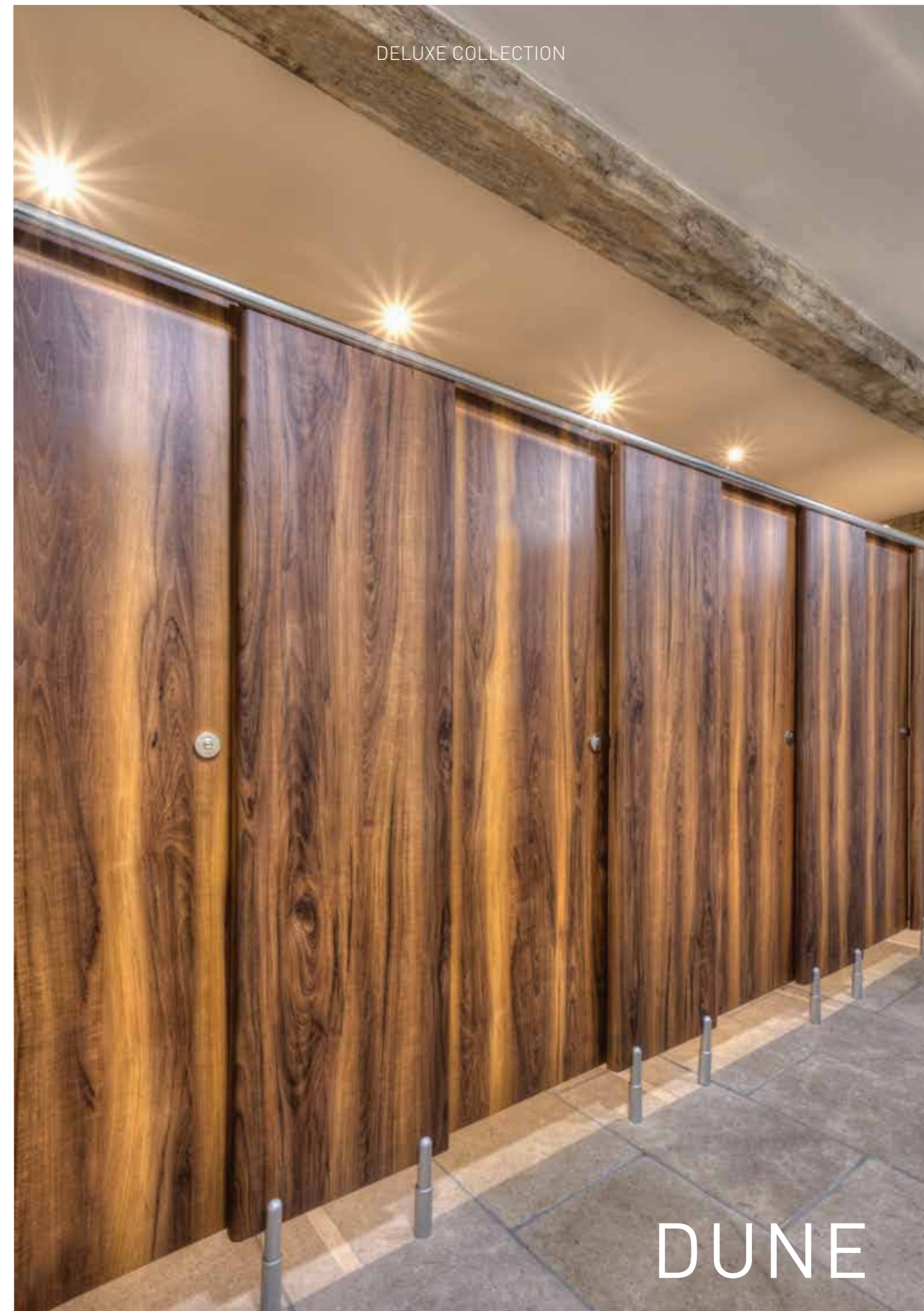
Toilet roll holders and hat & coat hooks are available as extras.



PANEL OPTIONS:



MARINE



Quality and value; DUNE fittings provide that bespoke feel without the price tag

Suitable for office environments and dry areas, DUNE cubicles create the right impression when it matters most and comes with a premium look, without a premium price tag. Postformed high pressure laminate pilasters (38mm thick) with 19mm melamine faced chipboard doors and partitions that give a stylish look and feel.

Satin anodised aluminium (SAA) fittings complete DUNE'S quality appearance.

This range is available in a variety of colours with matching vanity units and duct panels, for a totally co-ordinated look.

Toilet roll holders and hat & coat hooks are available as extras.



PANEL OPTIONS:



DUNE



Attractive and affordable; TROPIC is a range of sleek fittings to provide a durable classic look

Easy on the eye and the wallet, our attractive TROPIC range usually works well with 18mm thick melamine faced chipboard panels with colour matched edging and sleek satin anodised aluminium (SAA) fittings. Suitable for use in dry areas, these cubicles provide a cost effective option without compromising on design. Available in a variety of colours and door heights TROPIC will answer all your needs.

The Satin anodised aluminium (SAA) fittings include indicator bolts with external emergency release, a pair of rise/fall face/spine fix hinges, u shape wall and panel fixing brackets, adjustable height support leg and angle headrail.

PANEL OPTIONS:



TROPIC



Budget friendly and fast lead times; SOLAR cubicles shine in dry areas

The complete package for the budget conscious, SOLAR CONTRACT can supply everything you need to construct almost any arrangement of cubicles for toilets or changing areas in a dry environment. Available 'off the shelf'.

Made from 18mm melamine faced chipboard and available in a standard off the shelf colour range to maintain quick delivery to your door.

There are two different packs available: Pack A - Door Pack and Pack B-Partition Pack which together have everything you need to make most cubicle layouts. Fittings included are an indicator bolt with external emergency release, a pair of rise/fall face/spine fix hinges on channel, U-shaped wall channel and panel fixing brackets, adjustable height support leg, head rail & H section partition joint, toilet roll holder and hat & coat hook pack.

PANEL OPTIONS:



SOLAR

CHILDREN'S COLLECTION



Robust, stylish and fun; the PENGUIN range is appealing to children while remaining durable and easy to maintain

PENGUIN cubicles are the 'bees knees' for school toilets. Robust and resilient yet stylish and appealing to children while providing durable, easily cleaned and maintained toilets. Younger pupils favour vivid colours and designs but more sophisticated, muted colours can also be used to great effect.

When designing children's toilets, pupils should be involved as much as possible to encourage ownership and pride and improve behaviour. This could be as simple as choosing colours and fittings.

PENGUIN cubicles are usually made from virtually indestructible solid grade laminate with height options to suit Nursery, Keystage 1 and Keystage 2. The optional curved top doors and partitions come with black powder coated fittings as standard. Upgrade to coloured or even 'Teddy Bear' fittings for a more co-ordinated look.

They might be the smallest rooms in the school but they can have one of the biggest impacts on pupil health, education and happiness.

Toilet roll holders and hat & coat hooks are available as extras.



PANEL OPTIONS:



PENGUIN



Clean, bright and colourful; our JUNGLE cubicles withstand even the cheekiest of monkeys!

Children love clean, bright and colourful environments and JUNGLE cubicles provide this in abundance. Select from a vibrant choice of colours to give the children toilets they will be happy to use.

Doors, partitions and pilasters are usually made from 18mm melamine faced chipboard with colour matched edging and flat top doors and partitions. Doors and partitions come with three standard height options to suit Nursery, Keystage 1 and Keystage 2.

Standard satin anodised aluminium (SAA) fittings complete JUNGLE'S lively appeal. Upgrade to 'Teddy Bear' fittings for a look children will favour.

Toilet roll holder and hat & coat hook are available as extras.



PANEL OPTIONS:



JUNGLE

COLLECTION

COLLECTION



Unique and colourful; the RECYCLOO™ range is environmentally friendly and perfect for all situations

Recycloc™

Go 'green' with our RECYCLOO™ range of cubicles manufactured with board made from recycled plastic.

Installed in visitor centres, holiday camps, showgrounds and even RHS Harlow Carr Gardens, Bramall learning centre, there are a limitless number of situations where Recycloc™ can be used.

Impervious to water, the colourful options available give unusual and unique finishes that cannot be duplicated. Fittings can complement or contrast depending on individual choice.

While green design promises low carbon footprints, and green building processes reduce our negative ecological impact, the sourcing and production of materials is key to not only a healthy environment, but also to human health, wellbeing and workforce productivity. We wholeheartedly support this ethos.

Toilet roll holder and hat & coat hook are available as extras.



RECYCLOO™



NEPTUNE is the natural choice to **combat the effects of vandalism**, water or even chemicals

Robust, with distinctive fittings, we have designed this range with solid grade laminate to go the distance unscathed. What may seem like a more expensive solution to vandalism or abuse, installing NEPTUNE could pay for itself in the long run by minimising repairs.

Doors, pilasters and partitions are made from solid grade laminate – a material which is impervious to water, easily cleaned and does not harbour biological growth.

Fittings are black nylon coated aluminium with a smooth pore free finish (to help prevent build-up of dirt & bacteria) and include indicator latches with external emergency release, sets of 3 rise/fall saddle type hinges, wall and panel fixing brackets, adjustable height support leg and a tube / bracket headrail system.

Toilet roll holders and hat & coat hooks are available as an extra.

NEPTUNE

The easy to install, **flexible framed NAUTILUS** system

Stylish, tasteful, elegant and classy – these 'top end' NAUTILUS cubicles will stand the test of time. Perfect for areas of high volume usage such as schools, leisure centres and arenas, its robust build quality is proven to meet everyday demands.

A cubicle system that is easy on the eye, strong enough to combat the effects of heavy, prolonged and wet usage and yet be so adaptable.

The cubicles have flexible width doors, centre pilasters and corner posts with fitted adjustable height feet and so have the capability of presenting various widths to cope with most situations.

Toilet roll holders and hat & coat hooks are available as an extra.

NAUTILUS



FORTRESS is our **secure range of cubicles**, duct panels and vanity units

Fitted in high profile, high security sites around the country, you can't get tougher than this!

FORTRESS Security fixings come in stainless steel as standard and add to the robust solidity of these cubicles. They are pin hex or pin torx tamper proof fixings and the partitions are held in place in full length channels instead of using brackets and the legs are adjustable for height.

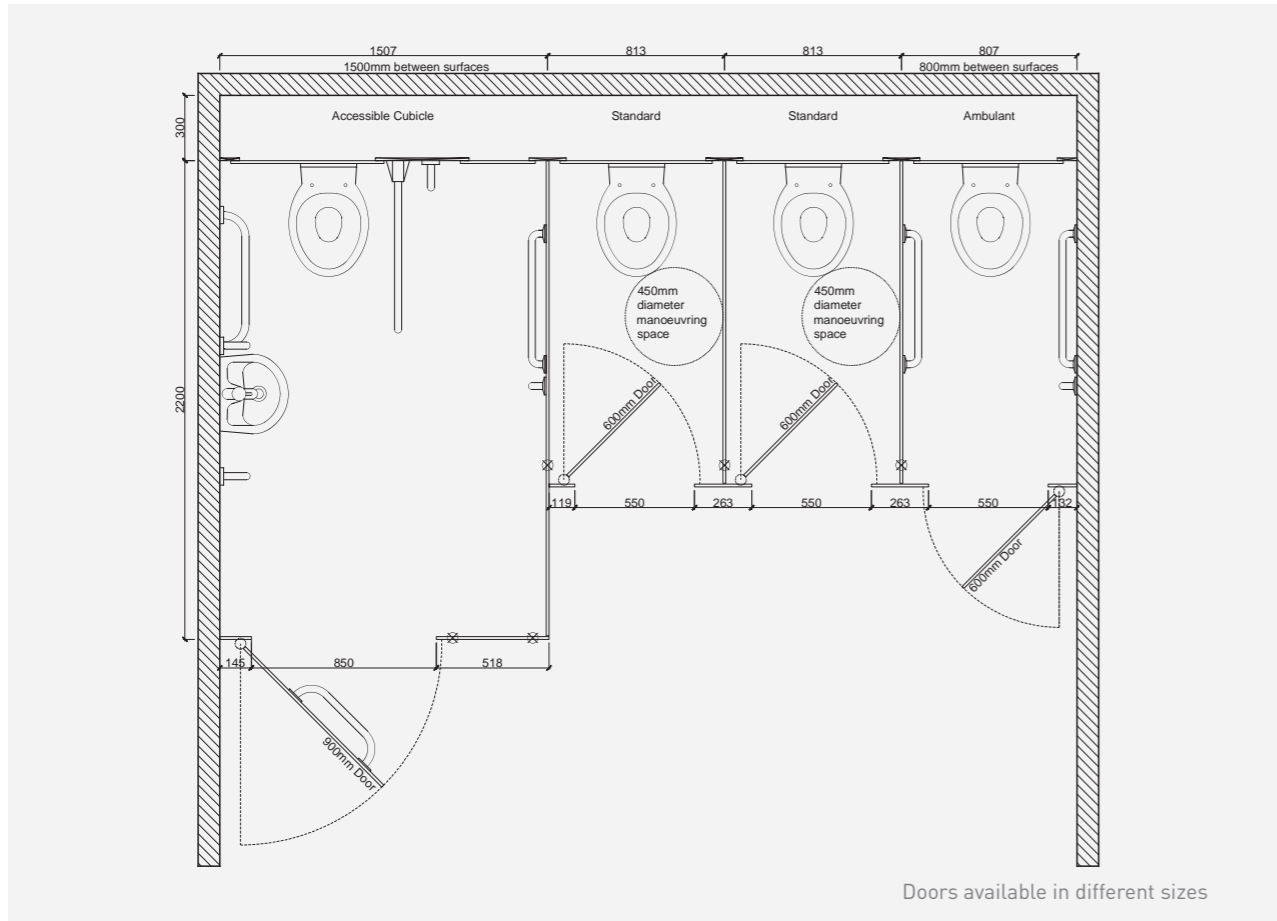
Suitable for high traffic areas that may be subject to abuse or vandalism, these cubicles really are the business! These cubicles can also be supplied in various heights including floor to ceiling.

If you really want a system to stand up to heavy wear and tear, Fortress is the one to choose.

Toilet roll holders and hat & coat hooks are available as an extra.

FORTRESS

CUBICLE LAYOUT OPTIONS



CUBICLE LAYOUT ADVICE

It is recommended that each cubicle should be a minimum of 750mm wide for Standard Cubicles.

Standard Cubicles should also have a 450mm diameter manoeuvring circle within the cubicle footprint.

If there is only one cubicle in a unisex area it must be an Ambulant type. This should have a clear internal width of 800mm, a depth of 1200mm and with an activity space of 750mm between an outward opening door and the edge of the toilet pan.

In separate sex toilets at least one Ambulant type cubicle should be provided and where there is four or more cubicles an Enlarged cubicles must also be provided.

An Enlarged cubicle should have a clear internal width of 1200mm and a depth of 1520mm For example, to have two Standard cubicles, one Ambulant cubicle and one Enlarged cubicle you need a minimum overall width of 3540mm Where the toilet cubicle is the only one in the building the width must be increased to 2000mm – this is known as a Universal Compartment. There should be a 1500mm minimum turning circle between the door and any other obstacles.

VANITY UNITS



VANITY UNITS

VANITY UNITS are available to suit our complete range of cubicles using our complete range of materials. They can also be constructed from Granite and solid surface materials like Corian or Hanex, as well as an innovative range of recycled materials.

Whether you need vanity units for tiny tots or executive offices, we have the answer to your requirements.



Available in:

- Various heights
- Various depths
- Post formed tops
- Square edge tops
- Up stand & Down stand options
- Lockable access panels options
- Lift off & Push on access panels
- Hinged access panel option
- Wash troughs
- Suitable for inset basins
- Suitable for sit on basins
- Suitable for semi-recessed basins
- Suitable for under mount basins
- Wall hung
- Stand alone
- Between Walls
- In a corner

VANITY UNITS



DUCTS & WALL PANELS

Aaztec's DUCT PANELS can be manufactured in a variety of our panel materials to complement and enhance any washroom. These panels provide space for concealed cisterns, thermostatic valves or general pipework maintaining a designed appearance whilst providing protection against vandalism or injury against hot pipework.

Duct panels not only conceal all of the pipework and services, they also provide a clean and attractive finish to the walls. They can be used to complement or contrast with other fittings and wall boarding can also be supplied to match, creating a seamless, co-ordinated finish around the room.

Aaztec duct panels can be supplied in Solid Grade Laminate, High Pressure Laminate with postformed edges, CDF, Recycloo™ and Melamine Faced Chipboard. Various heights are available.

They can be fitted with or without flash gaps, in contrasting or matching colours. Panels can be push fit, lift off, hinged, securely fastened or lockable.

Add matching modesty panels between urinal duct panel sets to allow privacy for users and a finished look.

Aaztec's WALL PANEL range is available in all our standard panel materials and are also available in WBP bonded HPL, PVC and tile effect SGL ideal for wet shower areas. Wall panels are a popular way to replace tiles and decorated walls with a hard wearing surface and an easy to clean hygienic surface with no grout lines to harbour mould and bacteria. The panels come in a wide range of surface finishes and colours to complement any washroom interior.



PANEL OPTIONS:



DUCTS & WALL PANELS



SANITARYWARE

SANITARYWARE is an integral part of any washroom so it is important to get the best style suited to its need.

We can provide sanitaryware to complement washroom's in all environments. We supply many leading brands of sanitaryware, from full ranges to individual pieces. From wall hung pans to eco flushing cisterns, sensor taps to designer wash troughs, industrial stainless steel urinals to children's feature taps - Aaztec have the ideal washroom sanitaryware solution.

A wide range of basins are available that can be wall hung, mounted in or on a vanity unit or formed within a solid surface vanity top. With these, a range of taps, from non-touch sensor operated, non-concussive push taps to children's designer lever taps are available to complement the style of basin.

We have toilets and cisterns that can be wall mounted and operated with sensors to custodial heavy duty resin ones. We have urinals and urinal troughs to suit all age ranges and waterless urinals to save water and be eco-friendly. Aaztec have a wide range of stainless steel sanitary ware available for all washroom areas including healthcare, custodial or any standard washroom layout.



SANITARYWARE

Washroom accessories are available to match and complement all of Aaztec's cubicle ranges. All self-respecting washrooms should be complete with those finishing touches that make it a pleasure to use. Everything from energy efficient hand dryers to stylish soap dispensers can enhance the washroom design.

HAND DRYERS

The Biodrier is the hygienic, fast, efficient and stylish way to dry hands in any washroom.

The Biodrier is based on a simple yet powerful idea – using the heat from its own motor to provide the hot air used to dry the user's hands. This means it uses much less power than conventional hot air hand dryers, saving money and reducing the carbon footprint.

The Biodrier is also quiet and produces a natural aroma that is both refreshing and relaxing. The design is also ergonomic, stylish and elegant.

Biobot is the new fun way of introducing children to drying their hands, and they can help save the planet too!



TOILET ROLL DISPENSERS

Various types of toilet roll dispensers and holders are available. We have selected a comprehensive collection of roll and pack dispensers in different finishes such as plastic and stainless steel, to suit any washroom environment.



PAPER TOWEL DISPENSERS

We have a wide range of paper towel dispensers. Suitable for C-fold or interfold towels, all are made for easy refilling. They range from low-cost plastic options to sleek metal designs to complement the style and design of your washroom.



SOAP DISPENSERS

We offer a range of foam and liquid soap dispensers and have included options for wall, basin and vanity mounting. Our soap dispensers are available in various different types of materials and finishes, including stainless steel, polished chrome, white metal and plastic.



OTHER ACCESSORIES

Various other accessories are available such as BABY CHANGERS, SHOWERS, TAPS, COAT HOOKS, TOILET SEAT CLEANERS, SIGNAGE and much, much more. Everything you could need to put the finishing touches to your washroom.



LOCKERS

LOCKERS

LOCKERS



Strong and secure; our wide range of LOCKERS are perfect for changing rooms and leisure centres

Lockers come in a huge range of configurations, ranging from standard use to heavy duty, ones suitable for wet or dry environments, and mini ones designed to store small personal valuables such as mobile phones, keys, wallets and purses. These can be incorporated into changing areas or 'banked' along a school corridor wall.

Locks come in Standard Cam, Swivel Lock (for use with a padlock), Coin or Token refund, Coin/Token collect, Electronic Contactless and Four Digit Mastered Combination or Dial Combination Locks.

When working environments call for tougher storage solutions, we can supply heavy duty lockers with 10mm thick solid grade laminate doors, providing a flush finish. The heavy duty hinges remain strong, even under persistent mistreatment.

A wide range of steel lockers for everyday use is also available, manufactured in an array of colours and sizes to suit a wide variety of locker requirements.





Made-to-measure; our BENCH systems provide exceptional long-life solutions for cloakroom and changing rooms

For a complete changing room area, Aaztec can supply made to measure bench seating.

Our bench systems are designed to provide exceptional long-life solutions for cloakroom and changing areas.

Various non-standard types of bench seating can be made to order, such as 'island' systems complete with coat hook supports. Contact us to discuss your bench seating requirements and to obtain a quote.



BENCHES



With Aaztec FURNITURE, we can supply anything from a single desk to a complete FF&E package

We can create bespoke items to fit exact spaces and individual requirements right through to equipping an entire school.

Everything from tables and desks, chairs and seating, early years furniture through to storage solutions, science labs and IT teaching rooms.

Just as every school, college or academy is unique, so are the solutions we can offer. We can work closely with you from the design stage through to delivery and installation or, if you prefer, can offer on a supply only basis for you to set out and install yourselves.



We supply quality furniture for the following areas:

- Science Furniture
- Food Technology
- Design Technology
- ICT Furniture
- Art & Textile
- Office Furniture

FURNITURE

Aaztec's increasing range of **SECURE FURNITURE** and products for secure healthcare and custodial environments

Our vast expertise in the production of custody furniture has made us a key contender in the manufacture of safe and secure, anti-ligature, custodial furniture for use in Prisons, Police Custody, Young Offender Institutions, Immigration Centres, Hospitals and Mental Health Trusts.

If you have any questions, or a specific requirement for a piece of furniture, please contact one of our specialists on 01423 326400 or email sales@aaztec.com, as we are able to manufacture or supply bespoke Custodial products for a variety of environments.



SECURE FURNITURE



Choose **HANDWASH STATIONS** for a completed and clean look in your washroom

The Wallgate 'Thrii' unit is a stylish handwasher drier that offers soap, water and drying all from one ergonomically designed unit.

The Thrii is a revolutionary design and the latest in the range of recessed anti-vandal hand wash/dryers. They are available in a range of vibrant solid surface colours or stainless steel finish options to suit any washroom. We can also provide a built-in handwash unit within Aaztec's IPS panel design.

Choose the Thrii and save space, water, energy - and eliminate paper towel waste!

HANDWASH STATIONS

Aaztec have extensive experience in supplying and installing **Mediduct™** in **HEALTHCARE** environments

Whether it is a complete washroom or an individual hand wash station, Aaztec can provide products that you can trust.

Patients and visitors have a right to expect a clean, tidy and well-maintained environment, when visiting healthcare facilities and Aaztec can ensure this with Mediduct™. Mediduct™ offers an innovative hygienic solution to the healthcare sector, with a unique panel system, fully compliant with NHS Estate Guidelines and HTM 64 panel specifications.

Sanitaryware to complement Mediduct™ can be supplied separately from our healthcare range, with no touch sensor activated taps and dispensers to reduce the transfer of bacteria and provide ease of maintenance.

These washroom panel products are manufactured using a range of materials treated to provide long lasting protection against bacteria and prevent further growth.



HEALTHCARE



Fully enclosed **SHOWERPODS** maximise both space and privacy

Aaztec are partnering with Taplanes to bring you shower facility solutions for your washroom project. The pods provide a completely waterproof and private environment in which to shower. Size, shape and specification details can be tailored to suit.

We can provide an external façade to seamlessly integrate the pods and complement the overall washroom design. Shower pods are ideal for modernising existing communal showering facilities where privacy is essential.

SHOWERPODS

SERVICE PLAN

Our unique **7-stage SERVICE PLAN** has been developed to ensure a pleasant and seamless experience with your project, from a simple vanity unit to an extensive refurbishment. We go the extra mile during every step of the process to ensure an outcome of the highest quality. Aaztec hold both ISO9001 Quality management system and ISO 14001 Environmental management system accreditations, to ensure consistent quality all the time.

-  **1. SPECIFICATION** - Our friendly and knowledgeable team will help you choose the most suitable products for your project. We can visit and survey your project if required. We are always available for any advice you may need, just call our helpful sales team, who can help you with technical support and provide product literature and samples.
-  **2. ESTIMATING** - Our estimating service levels have never been stronger. We pride ourselves in providing detailed and comprehensive quotations on time. We can also provide value engineered alternatives and cost effective available options.
-  **3. DESIGN PROCESS** - Once your order is placed, our in-house, highly skilled CAD technicians will prepare layout drawings and guide you throughout your project. Everything from dimensions, colours and drawings are sent for your approval prior to manufacture.
-  **4. PRODUCTION** - Our state of the art machinery allows us to streamline our production process to make it more efficient than ever before. Our highly skilled and hardworking production team will ensure that your products are finished to the highest level of quality.
-  **5. DELIVERY** - We're fully committed to delivering your order when you need it, wherever you are in the country. We can deliver direct to site, provide multi drop and on site distribution options. Our goal is to provide 100% on time and in full deliveries.
-  **6. INSTALLATION** - We can install all our products to ensure the highest quality control and finish. We also provide technical support to guide you through the installation process. We are CHAS and construction line accredited and all installation technicians are CSCS and CRB approved.
-  **7. AFTER SALES SUPPORT & CARE** - Once your products have been delivered, your dedicated point of contact will efficiently deal with all of your after sales needs. Attentive and highly efficient, they will ensure you're completely happy with our products and service.

DESIGN SERVICES



DESIGN STUDIO

Our design studio has been developed to assist architects, designers and end users select the perfect colour combination.

Use this interactive washroom design scheme to see how colours interact and match with each other, consider various options and see how your washroom will look before placing your order.

COLOUR SAMPLE SERVICE

Our sample service can make choosing your washroom design easier than ever; laminate/MFC/PBL/CDF/SGL swatches, solid surface and wood veneer samples can be delivered to your door.

To order samples call 01423 326400 or visit our website.



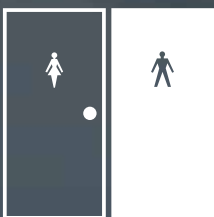
Aaztec Associates Limited,
Becklands Close, Boroughbridge,
North Yorkshire, YO51 9NR

T: 01423 326400

F: 01423 325115

E: sales@aaztec.com

www.aaztec.com



AAZTEC
CUBICLES



Our policy is one of continued improvement, and we reserve the right to change designs and specifications at any time without notice. All colours and finishes in this brochure are as accurate as printing processes will allow and are not to be used for matching purposes.