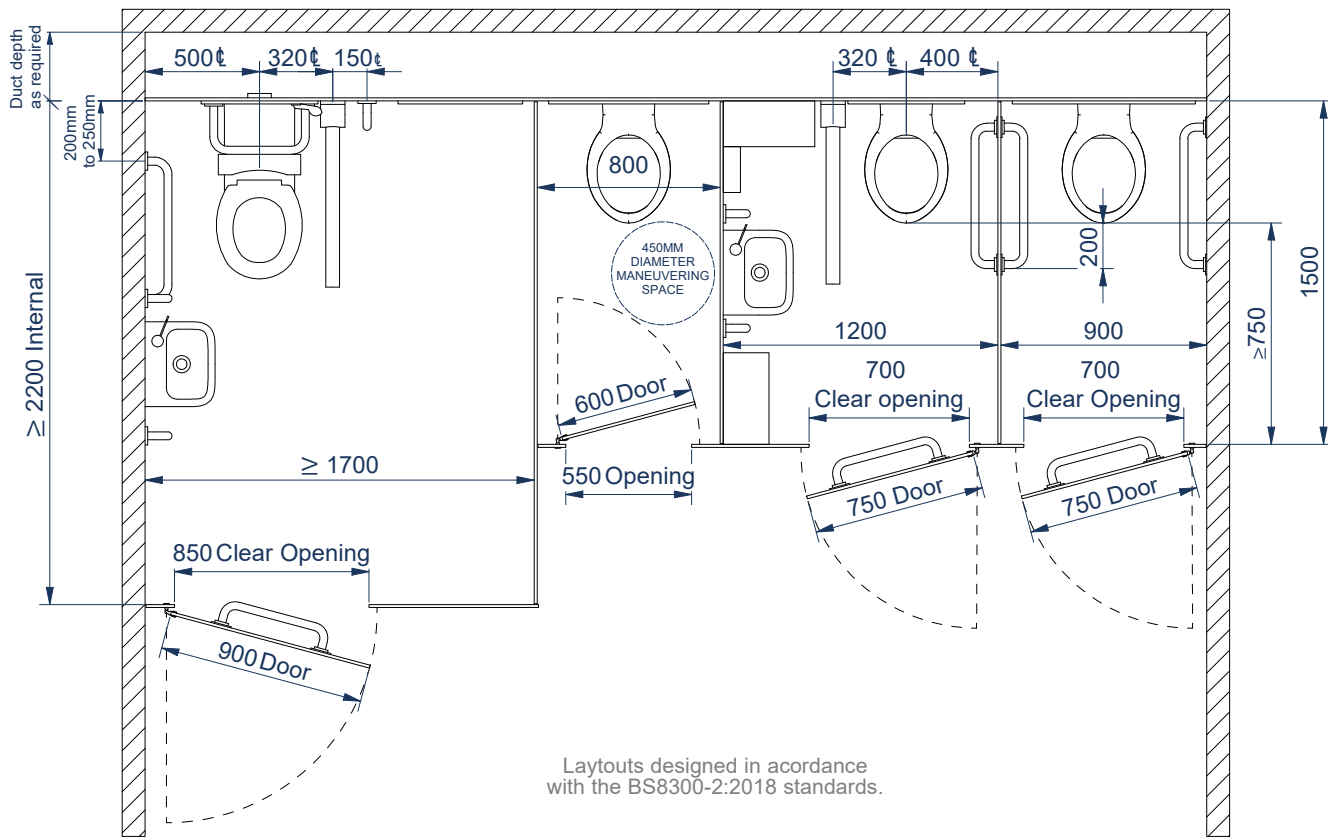


CUBICLE LAYOUT OPTIONS



[Click here](#)



[Click here](#)

We have the range for you!



[Click here](#)



[Click here](#)



Customers trust our expertise!

We recommend that each standard cubicle should be a minimum of 750mm wide. Standard Cubicles should also have a 450mm diameter manoeuvring circle within the cubicle footprint.

Within a single-sex washroom at least one cubicle should be an Accessible Ambulant. Within a unisex washroom at least one Unisex Ambulant cubicle should be provided. Both designs must incorporate a 750mm clear 'Activity' space between the front of the toilet pan and the internal front of the cubicle. There must also be a 850mm wide clear door opening.

If there is not a dedicated Accessible toilet in the area a Unisex Accessible cubicle should be provided. This design is the same for single-sex toilets and there should be one provided for each single sex washroom. The unisex accessible must be a minimum internal width of 1700mm and a minimum internal depth of 2200mm.

Changing rooms are not governed by the same regulations but we advise that at least one Family/ Enlarged cubicle is provided. We recommend a width of 1200mm by a depth of 1500mm but this may vary by layout based on the existing structure.

For more information or to discuss your requirements please contact us via the website at www.aaztec.com, by phone on 01423 326400 or by email at sales@aaztec.com

